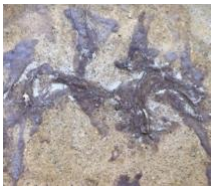
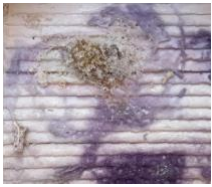


Revaluing Biowaste through 3D Printed Ceramics

Banana Peel Ash Glaze:

Master's Thesis Project by Miranda D'Ávila Winter
Under supervision of Prof. Helena Elias, CAPHE Regional Coordinator



This research forms part of a master's dissertation examining materiality and the role of matter in storytelling, and the potential for digital fabrication to engage with circular material practices.

Using porcelain clay and incorporating banana peel ash into ceramic glazes, the study reuses biowaste, integrating circular thinking into material experimentation. It bridges traditional glaze-making techniques with contemporary 3D printing, establishing a dialogue between past and future processes. It highlights the interplay between digital precision and material unpredictability, reflecting on how technology can expand ceramics' expressive and sustainable possibilities.

Key ideas:

- Reuse of biowaste through material experimentation
- Connection between craft traditions and digital fabrication
- Exploration of materiality and storytelling in ceramics
- Balance between digital precision and material unpredictability

